



## DAMEN RIB 2000D

### GENERAL

YARD NUMBER	571632-571643 + 571646/571647 (Damen Shipyards Hardinxveld) 2010/2011
DELIVERY DATE	2010/2011
BASIC FUNCTIONS	Fast interception and patrol
CLASSIFICATION	Lloyds Register
OWNER	Royal Navy The Netherlands

### DIMENSIONS

LENGTH O.A.	7.00	m
BEAM O.A.	2.60	m
DRAUGHT AFT	0.55	m

### TANK CAPACITIES

FUEL OIL (APPROX.)	160.0	Ltr.
--------------------	-------	------

### PERFORMANCES (TRIALS)

SPEED (3 PERSONS ABOARD)	31.0	knots
SPEED (6 PERSONS ABOARD)	30.0	knots
ACCELERATION (3 PERSONS ABOARD)	11.0	s (distance 100 m)
ACCELERATION (6 PERSONS ABOARD)	12.0	s (distance 100 m)

### PROPULSION SYSTEM

MAIN ENGINES	1x Volkswagen 225-6 TDI
TOTAL POWER	165 bkW (225bhp) at 4200 rpm
GEARBOXES	1x ZF-63 / 1.773:1
PROPULSION	1x Hamilton 274 waterjet
SHAFT	Aquadrive CV-30
CONTROLS/STEERING	KB-Twin 211800 (morse cables)

### AUXILIARY EQUIPMENT

ELECTRIC POWER SUPPLY	2x Battery 12V, buffered trough engine alternator
INTERNAL FIFI	AjaxMarine YS 2.5, activation temp. 141°C
BILGEWATER PUMP	Whale 9000, 145 l/min
BILGEWATER LEVEL SENSOR	Whale Supersensor BE9010

### DECK LAY-OUT

ANCHOR	1x Drift-anchor
HOISTING/SELF-RIGHTING FRAME	Aluminium with inflatable self-righting tube
HOISTING HOOK	Umoe Schat Harding ARH 44

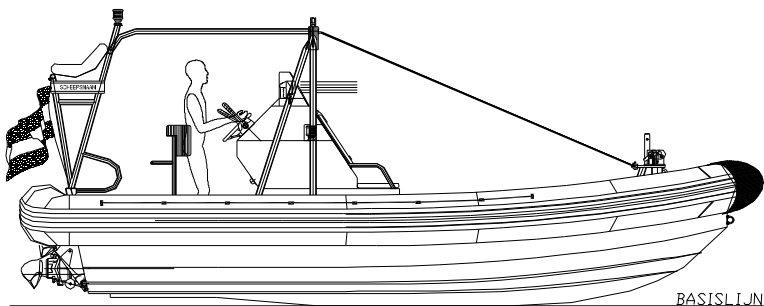
### ACCOMMODATION

Fully exposed standing places (3x) and seats (3x).

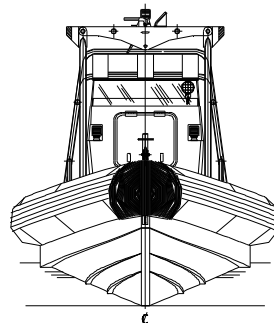
### NAUTICAL AND COMMUNICATION EQUIPMENT

HORN	1x Fiamm Macro 510
MAGNETIC COMPASS	1x Ritchie Supersport 1000
HANDHELD VHF	1x Axis 250 GMDSS
SEARCHLIGHT	1x Sealed Beam 50W

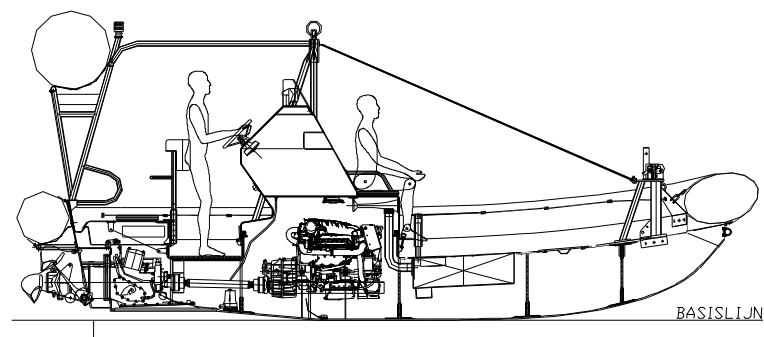
ZIJ AANZICHT



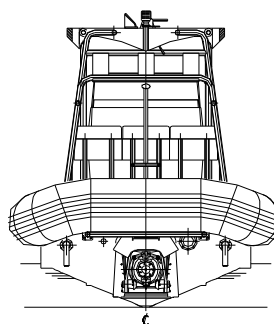
VOORAANZICHT



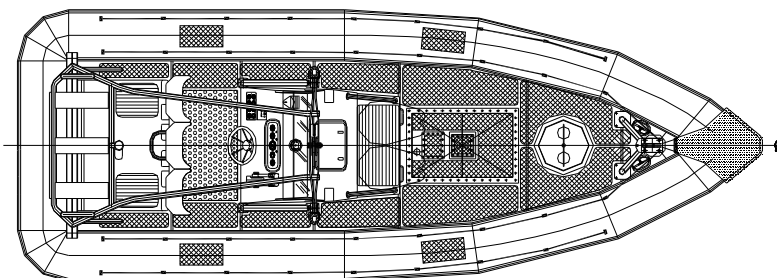
LANGSDOORSNED E



ACHERAANZICHT



BOVENAANZICHT



## DAMEN RIB 2000

# DAMEN

DAMEN SHIPYARDS HARDINXVELD

Member of the DAMEN SHIPYARDS GROUP



Rivierdijk 544  
3371 EB Hardinxveld-Giessendam

P.O. Box 60  
3370 AB Hardinxveld-Giessendam  
The Netherlands

phone +31 (0)184 61 30 88  
fax +31 (0)184 61 77 93

info@damen-hardinxveld.nl  
www.damenshipyardshardinxveld.nl